

清流の国 ぎふ

Gifu Prefectural Inland Fisheries Training Center



- Purpose -

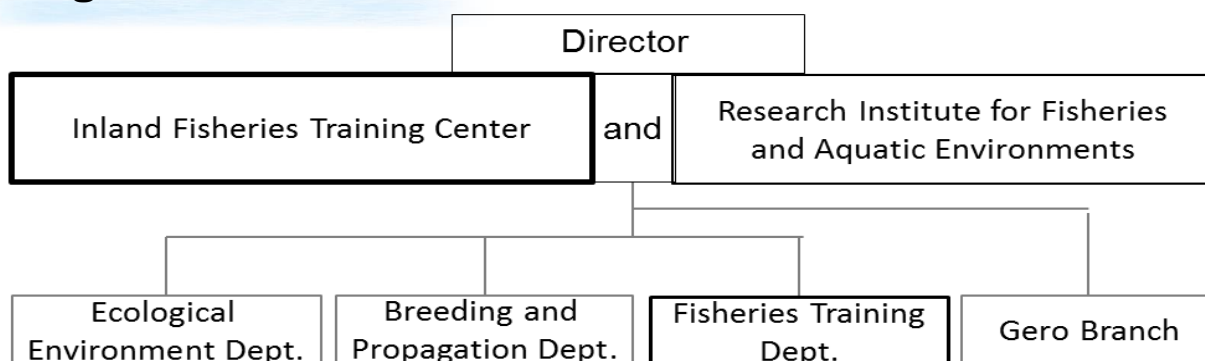
The Inland Fisheries Training Center shall be established within the Research Institute for Fisheries and Aquatic Environments, where all research results regarding inland fisheries in Gifu Prefecture is stored.

We seek to contribute to both GIAHS and the potential of inland fisheries in developing regions through the dissemination of the knowledge, techniques, and expertise of fishing and breeding that supports “Ayu of the Nagara River System”, itself designated as a GIAHS.

- Primary Objectives -

- Training programs will be conducted in developing regions with content tailored to their needs and requests regarding the management and aquaculture expansion techniques of inland fisheries.
- To cooperate with international organizations to dispatch experts to developing regions in order to provide assistant for better skills and techniques.

- Organizational Chart -



- Overview of the Center -

- The Inland Fisheries Training Center
- The Research Institute for Fisheries and Aquatic Environments (Headquarters)

Address : Mubanchi , Kanyuchi, Kasadamachi,
Kawashima-cho Kakamigahara-shi

Land Area : 8,906 m²

Total Floor Space of Building : 1,484m²

Breeding Pond : Indoor pond 143.5m², indoor FRP water tanks 83 tanks

Total number of staff : 17 (13 researchers, 4 administrative staff)



- The Research Institute for Fisheries and Aquatic Environments (Gero Branch)

Address : 2605-1 Hane, Hagiwara-cho, Gero-shi

Land Area : 22,395 m²








Total Floor Space of Building : 1,935m²

Breeding Pond : Outdoor ponds 168 ponds
(total area 5,349 m²)

Total number of staff : 15 (13 researchers, 2 administrative staff)



- Training Program Modules (Proposal) -

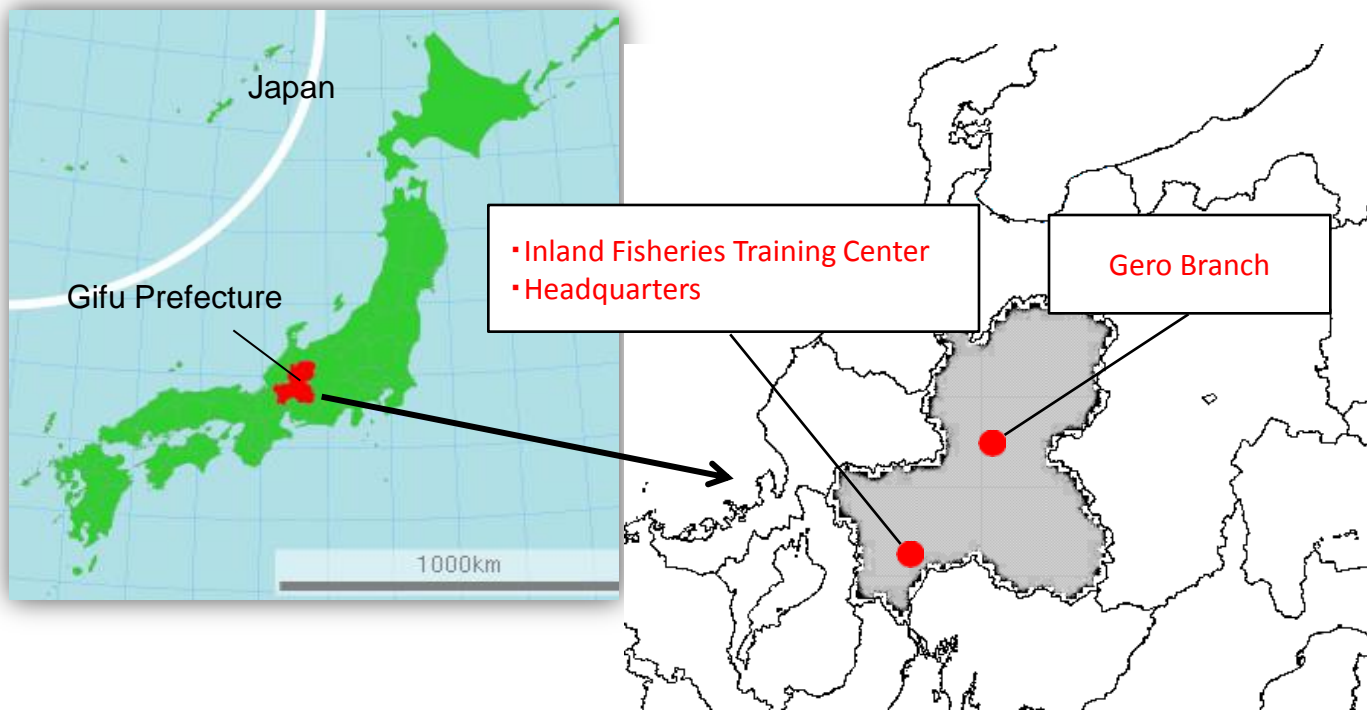
	Main Theme	Contents	
1	GIAHS: “Ayu of the Nagara River System”	<p>○GIAHS “Ayu of the Nagara River System” (lecture)</p> <ul style="list-style-type: none"> • The purpose and systems of GIAHS • Overall information of the Nagara River (location, catchment size and population of its basin) • Overview of the “Ayu of the Nagara River System” and its action plan 	
2	Environmental Conservation Initiatives in Consideration of the Links with Mountains, Rivers, and the Sea	<p>○Community-driven Conservation Efforts Devised to Incorporate the Links with Mountains, Rivers, and the Sea (lecture, field visit)</p> <ul style="list-style-type: none"> • Communicating traditional water conservation wisdom, such as <i>mizubune</i> (multi-leveled water tanks) • Tree planting activities by fishermen’s cooperatives: Overview of the Nagara River Watershed Forest Conservation Project • Fish ways monitored by locals for modification and support • Sewer management: Overview of sewer maintenance projects for ensuring water quality • Afforestation and forest management: Overview of forest maintenance projects for ensuring water quality 	
3	Fishery Zone Management by Fishermen’s Cooperatives	<p>○Fisheries Management by Fishermen’s Cooperatives (lecture, field visit)</p> <ul style="list-style-type: none"> • Fishery Act and Fishery Coordination Regulation: Legislation concerning fishery zone management • Regulation of recreational fishing and fishery rights usage: Regulation of fishery zone management by cooperatives • Initiatives to increase resources: Fishermen’s cooperatives conduct the releasing of juveniles • Other initiatives: The harvest and sale of ayu, etc. 	 
4	Using the System for Tourism and Branding	<p>○Making Use of Inland Fishing for Tourism and Branding (field visit)</p> <ul style="list-style-type: none"> • Cormorant fishing history: Visit to the <i>Ukai</i> Museum • Cormorant fishing: Explore how traditional fishing methods have been used for tourism purposes • Gujo Ayu: Branding with a regional collective trademark • Distribution: Harvest, sorting, hygiene, and freshness management of premium ayu 	
5	Aquaculture Dissemination Techniques	<p>○Aquaculture Dissemination Techniques (lecture, training, field visit)</p> <ul style="list-style-type: none"> • Ayu fry production techniques: Ayu’s reproductive characteristics, fry production methods and training • Trout fry production techniques: Trout’s reproductive characteristics, fry production methods, and training • Catfish fry production techniques: Catfish’s reproductive characteristics, fry production methods, and training • Visiting the facility where ayu fry are hatched 	 

- Schedule -

2016 Establishment of the Inland Fisheries Training Center (July 24)
Acceptance of trainees from JICA (July and October)
Dispatch of a researcher to Thailand (August)
Acceptance of trainees from Thailand (October)
Dispatch of researchers to SEAFDEC (November)
Acceptance of trainees from SEAFDEC (TBD)

After 2017 Continued acceptance of trainees from JICA (every July and October)
Continued acceptance of trainees from SEAFDEC

- Location -



Inland Fisheries Training Center

(Headquarters of the Research Institute for Fisheries and Aquatic Environments)

Mubanchi, Kanyuchi, Kasadamachi, Kawashima-cho Kakamigahara-shi,
501 - 6021 JAPAN
TEL : +81-586-89-6351
FAX : +81-586-89-6365

Gero Branch

2605 - 1 Hane, Hagiwara-cho, Gero-shi, 509 - 2592 JAPAN
TEL : +81-576-52-3111
FAX : +81-576-52-4354

Web Site <http://www.fish.rd.pref.gifu.lg.jp/>

